

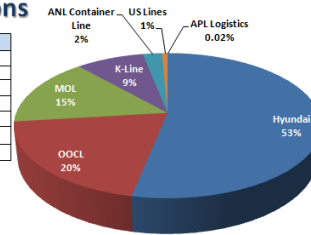
## Supply Chain Optimization & Performance Evaluation

At OOCL Logistics, we see the success of our customers as our own success. Therefore, we apply decades of supply chain experience, tested methods, best practices and analytical tools to design and implement customized solutions that help maximize the value of our customers' supply chain.

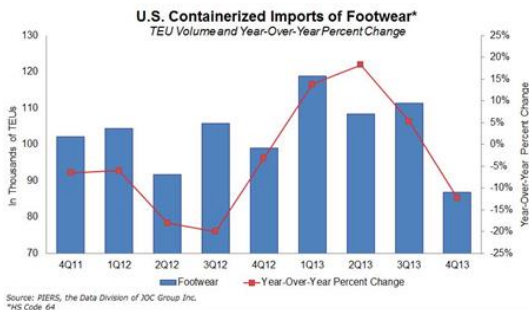
your business. Set goals based on these improvement areas and put corrective action in place to improve your processes. Some examples of the readiness metrics includes:

### Carrier Allocations

Carrier	FEU	FEU%
Hyundai	555	53%
OOCL	208	20%
MOL	161	15%
K-Line	88	8%
ANL Container Line	25	2%
US Lines	7	1%
APL Logistics	0.2	0.02%



- ↳ Related market recap: some news and trends that have impacts to your business
- ↳ Business review: YTD shipment summary and volume review and container utilization review
- ↳ Key performance indicators of your carriers and vendors
- ↳ Services hiccup summary and recommendation for your supply chain...etc.



To materialise such goal, we proudly present SCOPE.

SCOPE is an evaluation of critical elements and important metrics that can reveal opportunities in your supply chain. With SCOPE, your supply chain goals are assessed regularly;

new solutions and strategies are developed to cope with

the market changes. With years of logistics and supply chain management experience, we provide you with valuable experience and insights into your specific needs and cultivate strategic solutions that produce efficiencies for you.

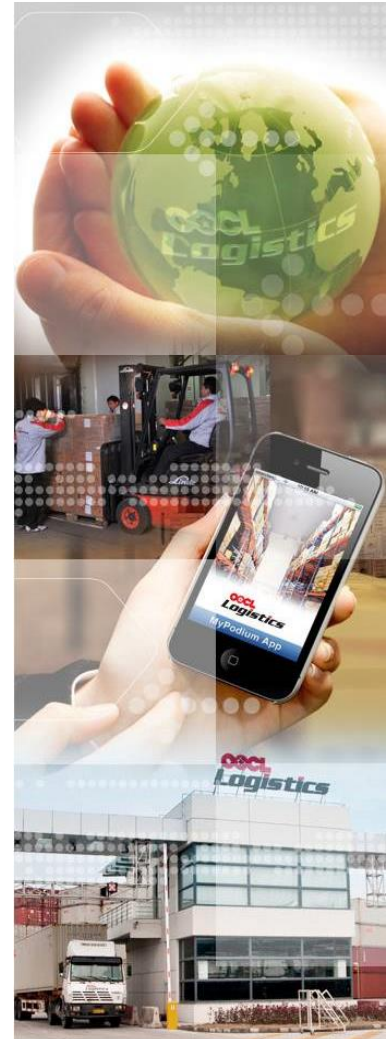
Several types of indicators have been developed to measure a wide range of supply chain and logistics activities. Choosing the type of indicator to measure can be daunting. We will help you to identify the metrics on the vital measurements that mean the most to

# SCOPE

Supply Chain Optimization & Performance Evaluation

The evaluation results enable you to react promptly after realizing any deviation from plan and adjust the control on future shipments accordingly to ensure cost efficiency and resources optimization.

Through the SCOPE evaluation we offer feasible advices and in-depth guidance into your supply chain – striving to be more than just the people who move the freight.



Contact your OOCL Logistics Sales or Customer Sales Support Representative now about beginning your regular SCOPE evaluation.

### Container Utilization Overview

CY-CY (Vendor Load) Volume by Container Type

Container Type	Number of Containers
GP20'	74
GP40'	259
HQ40'	330
HQ45'	299
RQ40'	1

CFS-CY (Cross-Dock) Volume by Container Type

Container Type	Number of Containers
GP20'	1
HQ40'	1

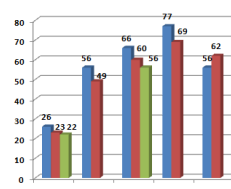
CY-CY (Vendor Load) Average Container Utilization

Container Size	Minimum Load Factor	Target Load Factor	Average CY-CY Utilization
GP20'	35 CBM	25 CBM	23 CBM
GP40'	35 CBM	56 CBM	49 CBM
HQ40'	56 CBM	66 CBM	60 CBM
HQ45'	68 CBM	77 CBM	69 CBM
RQ40'	35 CBM	56 CBM	62 CBM

CFS-CY (Cross-Dock) Average Container Utilization

Container Size	Minimum Load Factor	Target Load Factor	Average CFS-CY Utilization
GP20'	18 CBM	26 CBM	22 CBM
HQ40'	56 CBM	66 CBM	56 CBM

### Load Factor Overview



## Most Valuable Partner for Panasonic



OOCL Logistics Xiamen received "The Most Valuable Partner for Logistics Business In 2013" award from Mr. Hiroyuki Takahashi, Managing Director of Panasonic Logistics China, for handling import customs services. OOCL Logistics began serving Panasonic years ago and over that time we have built up a long-term strategic supply chain partnership. The import customs services we provide Panasonic cover the

major ports in China and beyond, and this level of service requires a high-level of mutual trust. Because of this already strong relationship, OOCL Logistics and Panasonic continue to extend our joint cooperation to downstream supply chain activities.

We would like to take this opportunity to sincerely thank Panasonic (China) Co., Ltd. for the Most Valuable Partner for Logistics Business award and we continue to be committed to providing these same consistent, high quality services to all of our customers – services that have made OOCL Logistics, a trusted supply chain partner!



**OOCL Logistics (CHINA) Ltd.**  
Hours of Operation:  
Mon - Fri: 0830 - 1730 hrs



## Myanmar: Continue Expansion in ASEAN NORTH

OOCL Logistics (Myanmar) Ltd. (OLMYL) has recently been officially inaugurated after having received a permanent business license from the government.

The set up of the new OLL office based in Yangon, complement our existing network under the ASEAN North OLL Region Group, after Thailand, Vietnam, and Cambodia. OOCL Logistics (Myanmar) offers the following services:

- International Supply Chain Management
- Local Warehouse Storage Facility (Non-Bonded)
- Domestic Distribution
- Custom Clearance for Import/Export
- LCL Service



With the rapid emergence of democracy and economic reform in the country, direct investment from around the world has grown drastically, particularly in the manufacturing sector. The economy is, benefiting from rising investment and improved business confidence since the government started to rejuvenate and open the economy in 2011.

We realize the significant opportunity for your development and sustained growth in Myanmar. Here we are to facilitate and support your supply chains efficiently and effectively.



**OOCL Logistics (Myanmar) Ltd.**  
Hours of Operation:  
Mon - Fri: 0830 - 1700 hrs



Contact Us  
[www.oocllogistics.com](http://www.oocllogistics.com)



OOCL Logistics is a world-class provider of innovative logistics and supply-chain services and solutions, which has an extensive network of more than 100 offices in over 30 countries.

Providing advanced customer-specific solutions through our value-creating services and IT technology in supply-chain management; OOCL logistics' extensive service network and platforms will allow you to make All the Right Moves for your business. Our dedicated, quality people always provide you with tailor-made logistics solutions, customized to your particular needs.