

Newsletter

Issue 2015010
Issue Date: 30 January 2015

Supply Chain Insight

Shipping Supply chain managers must continuously seek ways to increase efficiency and maximize the performance of their service and transport providers. To do this they must closely monitor shipment processes and analyze supply chain performance to maintain competitive advantage. Gathering the data from multiple sources for an effective analysis requires intensive effort and choosing the right type of indicators to measure can make or break the process.

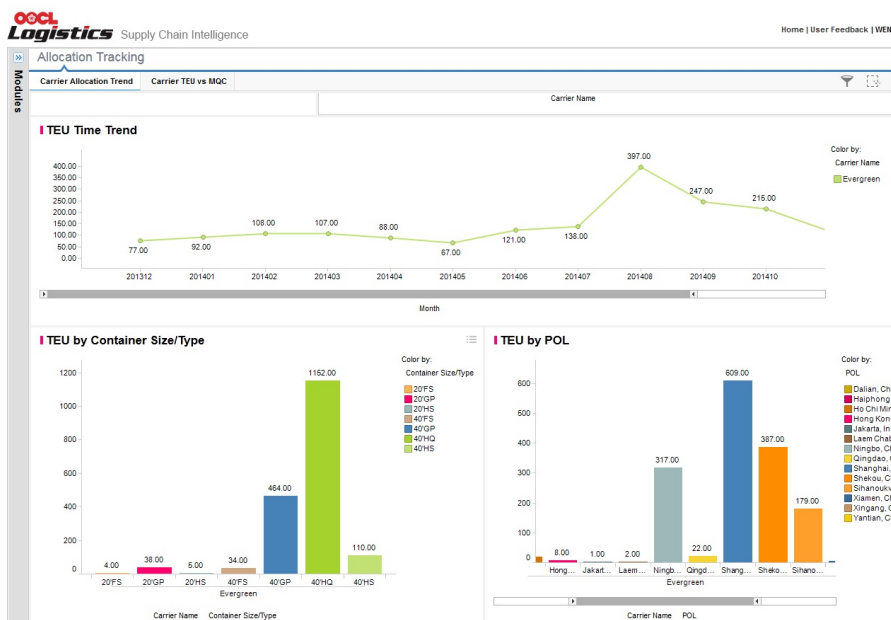
To facilitate our customers' supply chain analysis, OOCL Logistics Supply Chain Intelligence reports – Insight are the ultimate tool to identify deviations from expectations and enable immediate action. OOCL Logistics' supply chain management teams have developed multiple indicators to measure the wide range of supply chain and logistics activities.

Features

- Near real-time monitoring of your supply chain community and KPI across various dimensions

proactively to adjust your supply chain activities to ensure cost efficiency and resource optimization. You benefit from smart business strategies based on intelligence-based analysis.

OOCL Logistics Supply Chain Intelligence integrates supply chain data from across your enterprise to provide near real-time monitoring of performance increasing supply chain collaboration and reducing costs.



- Detailed visual analysis of supply chain shipment status
- Exception intelligence analysis for better supply chain shipment management
- Supply chain finance analysis for future business reference
- Integrated directly into OOCL Logistics' PODIUM system

Benefits

Using these graphically orientated reports you can detect trends before they become issues and react

For further information, please contact us at product@oocllogistics.com.



Wrapping up for Year 2014

As this year comes to a close, it is time to look at what has been accomplished in 2014 before ringing in the New Year.

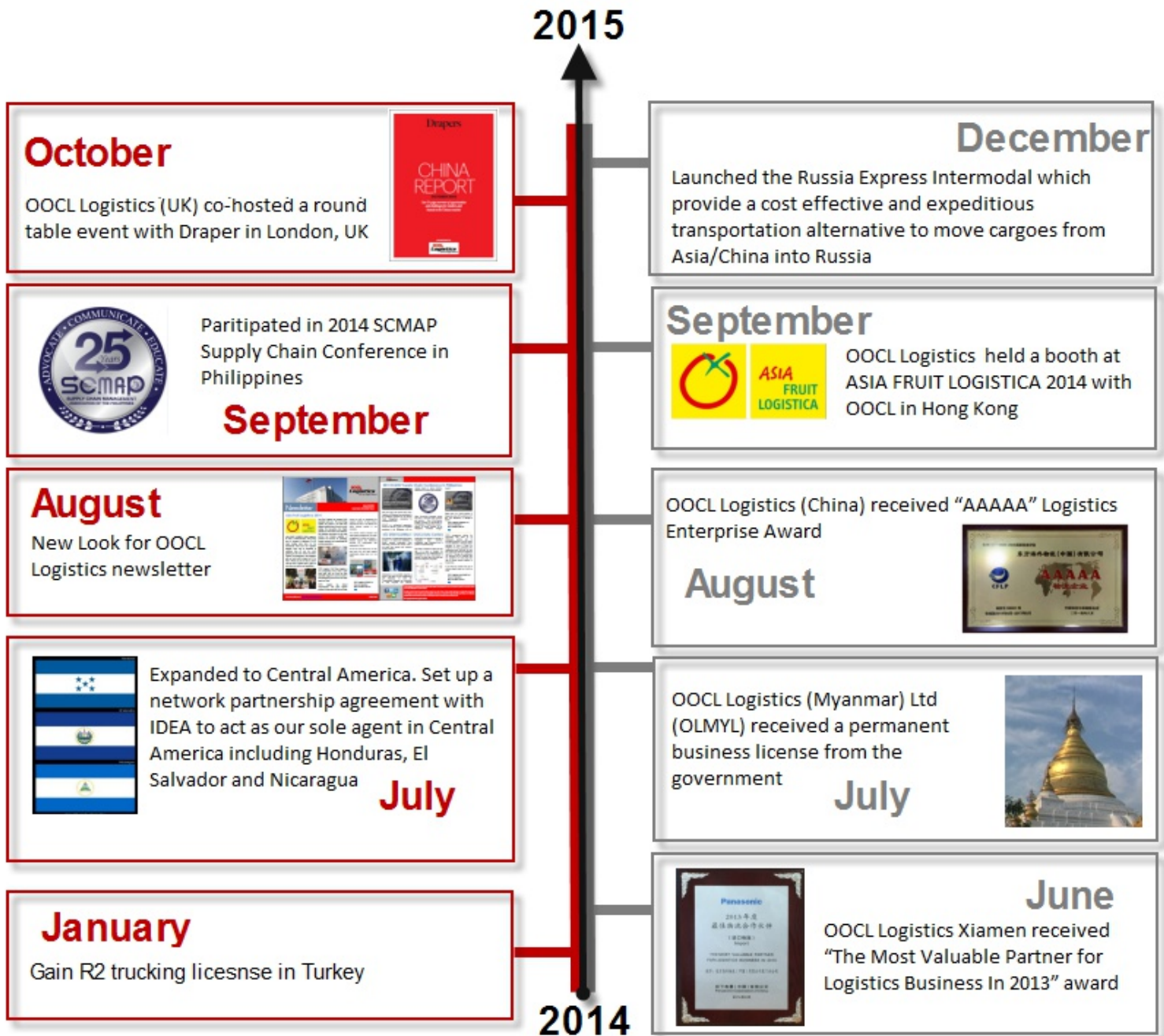
The timeline below is a summary collected from all issues of our OOCL Logistics newsletter last year. Besides those not mentioned, OOCL Logistics

has actually achieved quite a lot in year 2014 as we have processed over 20,000,000 CBM of cargo worldwide.

We will not stop here, and will continue to expand our network and service spectrum to areas where our customers' needs are, particularly in

developing countries. We will continue to design cost effective and responsive supply chains to meet dynamic consumer demand.

OOCL Logistics looks forward to continuing to serve your supply chain needs in 2015.



OOCL Logistics is a world-class provider of innovative logistics and supply-chain services and solutions, which has an extensive network of more than 100 offices in over 30 countries.

Providing advanced customer-specific solutions through our value-creating services and IT technology in supply-chain management; OOCL logistics' extensive service network and platforms will allow you to make All the Right Moves for your business. Our dedicated, quality people always provide you with tailor-made logistics solutions, customized to your particular needs.